

# VILLAS DEL MAR - UNIT 2

A PLANNED UNIT DEVELOPMENT

A PORTION OF SECTION 27, TOWNSHIP 47 SOUTH, RANGE 42 EAST, PALM BEACH COUNTY, FLORIDA, BEING A REPLAT OF A PORTION OF TRACT NO. 37 OF BOCA DEL MAR NO. 3 AS RECORDED IN PLAT BOOK 30, PAGES 82-84 OF THE PALM BEACH COUNTY PUBLIC RECORDS

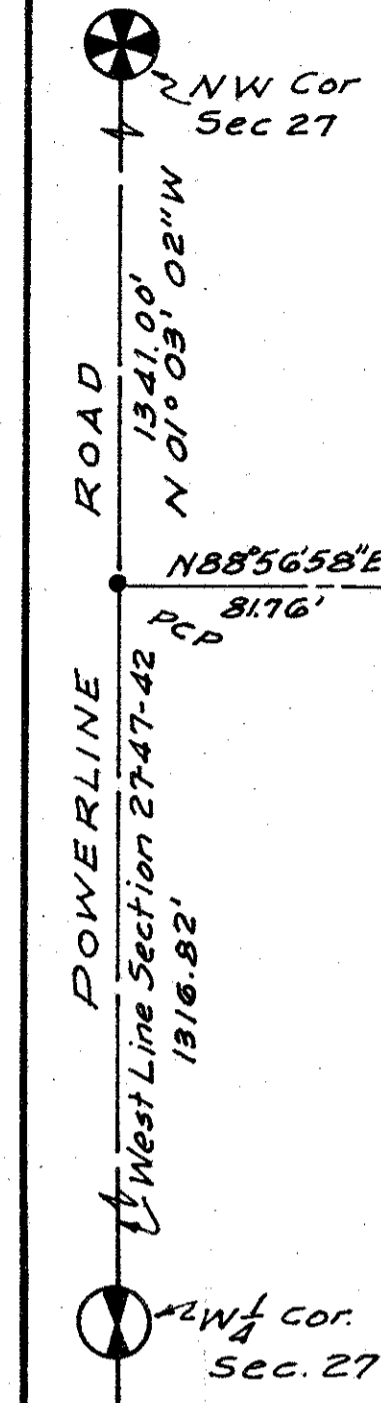
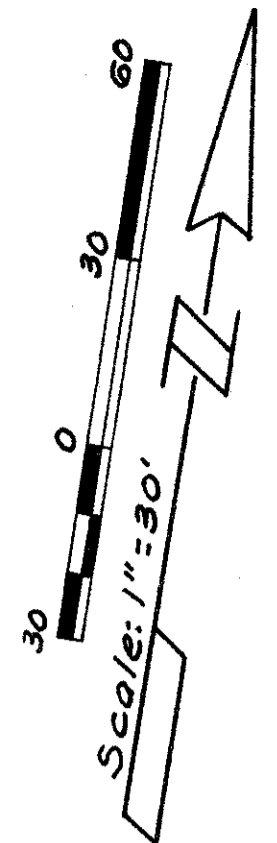
WALTER A. CORNNELL, INC.

CONSULTING ENGINEERS AND LAND SURVEYORS

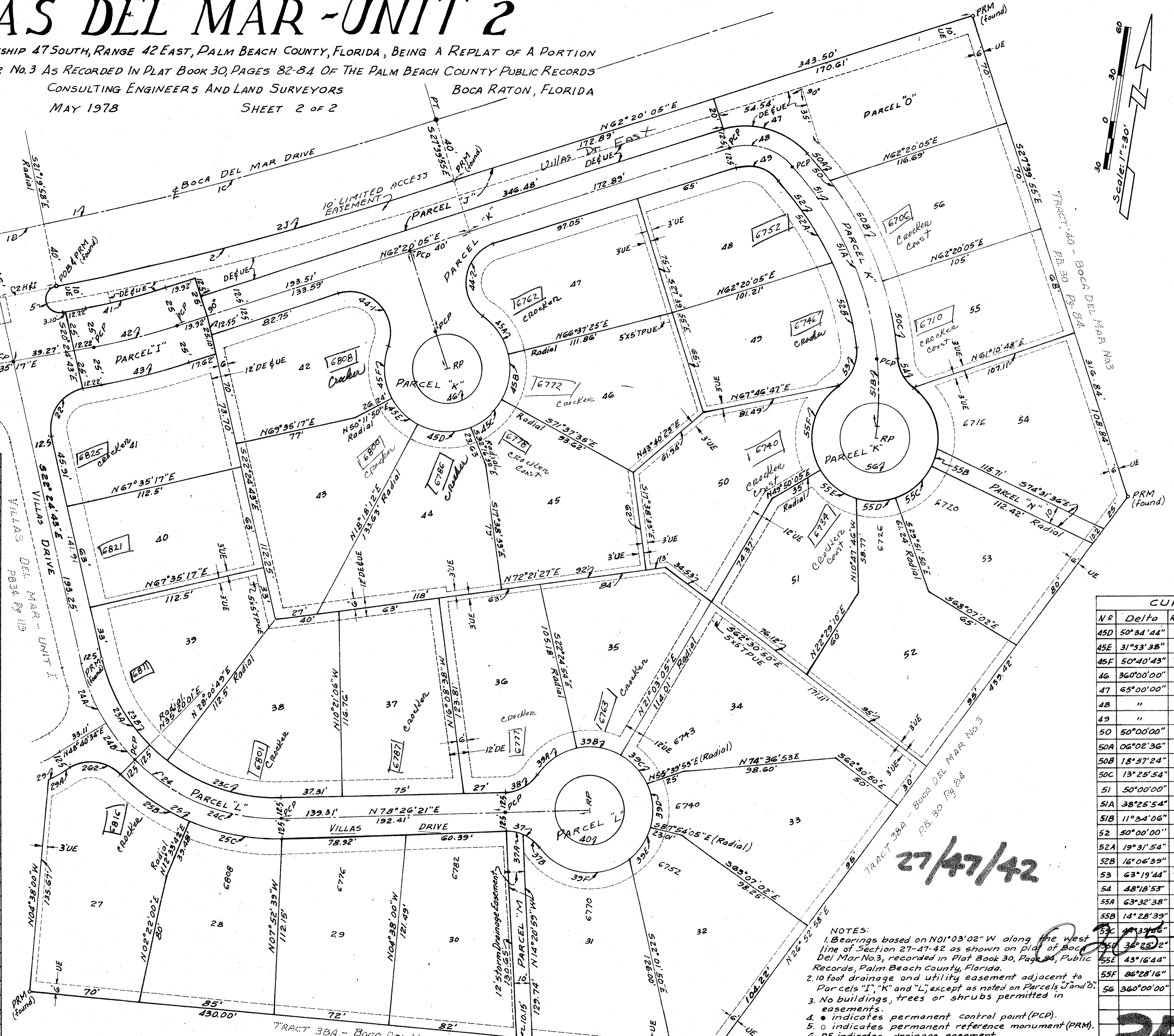
BOCA RATON, FLORIDA

MAY 1978

SHEET 2 OF 2



CURVE DATA					
NR	Delta	Radius	Tangent	Arc	Chord
1	26°36'53"	2291.83'	542.08'	1064.59'	1055.04'
1A	19°19'35"	"	"	773.06'	769.40'
1B	00°54'21"	"	"	38.23'	38.23'
1C	06°19'57"	"	"	253.30'	253.17'
2	26°36'53"	2331.83'	551.54'	1093.17'	1073.46'
2H1	00°55'15"	"	"	37.48'	37.48'
2J	06°19'57"	"	"	257.72'	257.59'
5	179°04'45"	8.36'	"	26.13'	16.72'
22	92°00'00"	25.00'	"	40.14'	35.97'
23	79°08'56"	112.50'	92.98'	155.41'	143.34'
23A	32°15'16"	"	"	63.33'	62.50'
23B	39°34'28"	"	"	77.70'	76.17'
23C	39°34'28"	"	"	77.70'	76.17'
24	79°08'56"	125.00'	103.32'	172.68'	153.27'
24A	18°54'43"	"	"	41.26'	41.07'
24B	13°20'33"	"	"	29.11'	29.04'
24C	46°55'40"	"	"	102.31'	99.48'
25	79°08'56"	137.50'	113.65'	189.94'	175.20'
25B	22°46'19"	"	"	54.65'	54.29'
25C	24°07'21"	"	"	57.89'	57.46'
26	76°39'27"	25.00'	"	33.49'	31.01'
29	31°37'22"	121.09'	34.29'	66.85'	65.99'
29A	07°12'49"	"	"	15.25'	15.23'
37	54°45'56"	25.00'	"	23.90'	23.00'
37A	23°52'07"	"	"	10.42'	10.34'
37B	30°53'49"	"	"	13.48'	13.32'
38	54°45'56"	"	"	23.90'	23.00'
39A	43°54'41"	40.00'	"	30.66'	29.91'
39B	43°27'59"	"	"	30.35'	29.62'
39C	34°36'48"	"	"	24.16'	23.80'
39D	36°25'12"	"	"	25.43'	25.00'
39E	"	"	"	"	"
39F	94°41'10"	"	"	66.10'	58.85'
40	360°00'00"	2200'	"	138.23'	"
41	07°15'12"	339.71'	25.33'	50.60'	50.57'
42	"	424.71'	26.92'	53.77'	53.73'
43	"	449.71'	28.50'	56.93'	56.89'
44-1	128°32'28"	25.00'	"	55.99'	45.04'
44-2	"	"	"	"	"
45A	42°49'48"	40.00'	"	29.90'	29.21'
45B	41°45'00"	"	"	29.15'	28.51'
45C	39°21'03"	"	"	27.47'	26.94'



39

CURVE DATA					
NR	Delta	Radius	Tangent	Arc	Chord
45D	50°34'44"	40.00'	"	35.31'	34.18'
45E	31°53'38"	"	"	22.27'	21.98'
45F	50°40'43"	"	"	35.38'	34.24'
46	360°00'00"	22.00'	"	138.23'	"
47	65°00'00"	50.11'	31.92'	56.85'	53.85'
48	"	37.61'	23.96'	42.67'	40.42'
49	"	25.11'	16.00'	28.49'	26.98'
50	50°00'00"	215.48'	100.48'	188.04'	182.13'
50A	06°02'36"	"	"	22.73'	22.72'
50B	18°57'24"	"	"	71.29'	70.97'
50C	13°25'54"	"	"	50.51'	50.40'
51	50°00'00"	202.98'	94.65'	177.13'	171.57'
51A	38°25'54"	"	"	196.15'	133.61'
51B	11°34'06"	"	"	40.98'	40.91'
52	50°00'00"	190.48'	88.82'	166.23'	161.00'
52A	19°31'54"	"	"	64.93'	64.62'
52B	16°06'39"	"	"	53.56'	53.38'
53	63°19'44"	25.00'	"	27.63'	26.25'
54	48°18'53"	"	"	21.08'	20.46'
55A	63°32'38"	40.00'	"	44.36'	42.12'
55B	14°28'39"	"	"	10.11'	10.08'
55C	41°33'46"	"	"	31.18'	30.46'
55D	36°25'12"	"	"	25.43'	25.00'
55E	43°16'44"	"	"	30.21'	29.50'
55F	86°28'16"	"	"	60.37'	54.80'
56	360°00'00"	2200'	"	138.23'	"

- NOTES:
- Bearings based on N01°03'02" W along the West line of Section 27-47-42 as shown on plat of Boca Del Mar No. 3, recorded in Plat Book 30, Page 84, Public Records, Palm Beach County, Florida.
  - 10 foot drainage and utility easement adjacent to Parcels "I", "K" and "L", except as noted on Parcels "J" and "O".
  - No buildings, trees or shrubs permitted in easements.
  - indicates permanent control point (PCP).
  - indicates permanent reference monument (PRM).
  - DE indicates drainage easement.
  - UE indicates utility easement.
  - POB indicates POINT OF BEGINNING.
  - RP indicates radial point.
  - TPUE indicates utility easement for transformer pad.

This instrument was prepared by Walter A. Cornell, Walter A. Cornell, Inc. 24 S.E. 4th Street, Boca Raton, Fla.

# VILLAS DEL MAR - UNIT 2

35/173